



A FIVE-BUILDING 360,000-SQUARE FOOT CLASS A OFFICE PARK

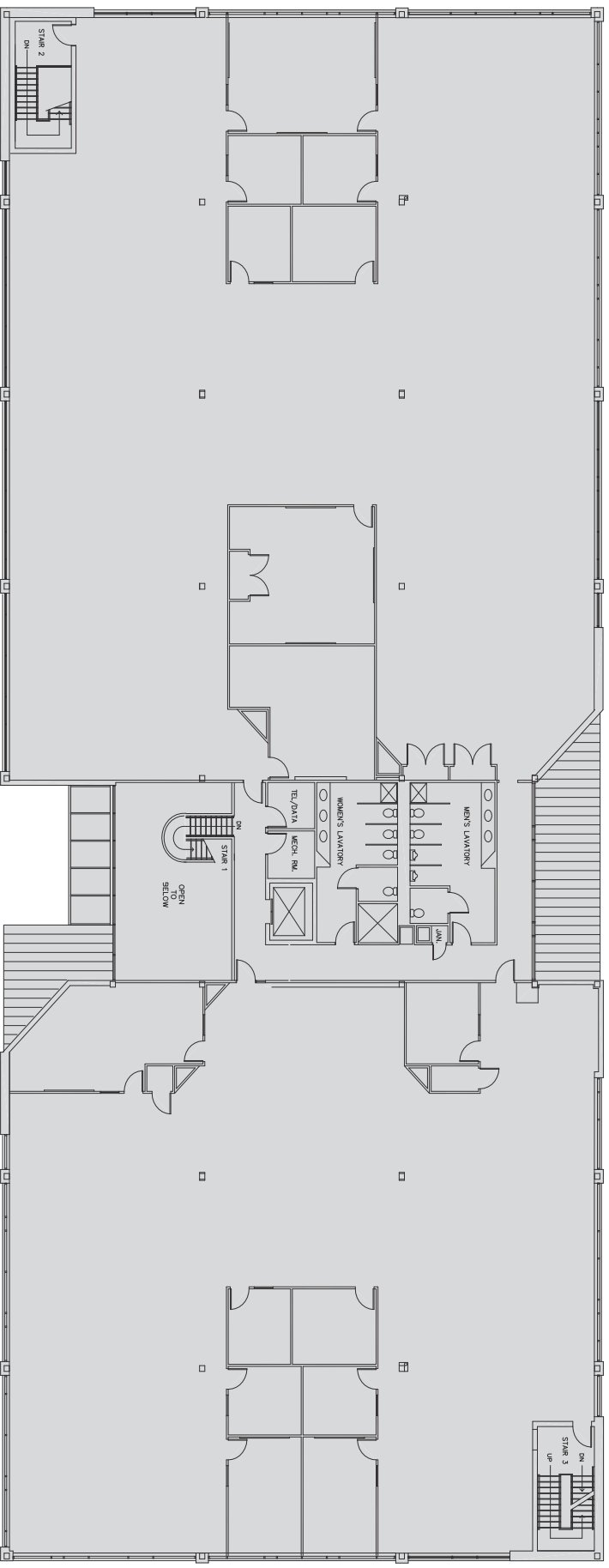
KILN BROOK OFFICE PARK

LEXINGTON, MASSACHUSETTS

83 HARTWELL AVENUE

SECOND FLOOR

22,135 SF



FARLEY | WHITE
INTERESTS

FOR MORE INFORMATION, CONTACT
ROB CONNORS 617 654 9422 OR RCONNORS@FARLEYWHITE.COM

155 FEDERAL STREET
18TH FLOOR
BOSTON, MA 02110