



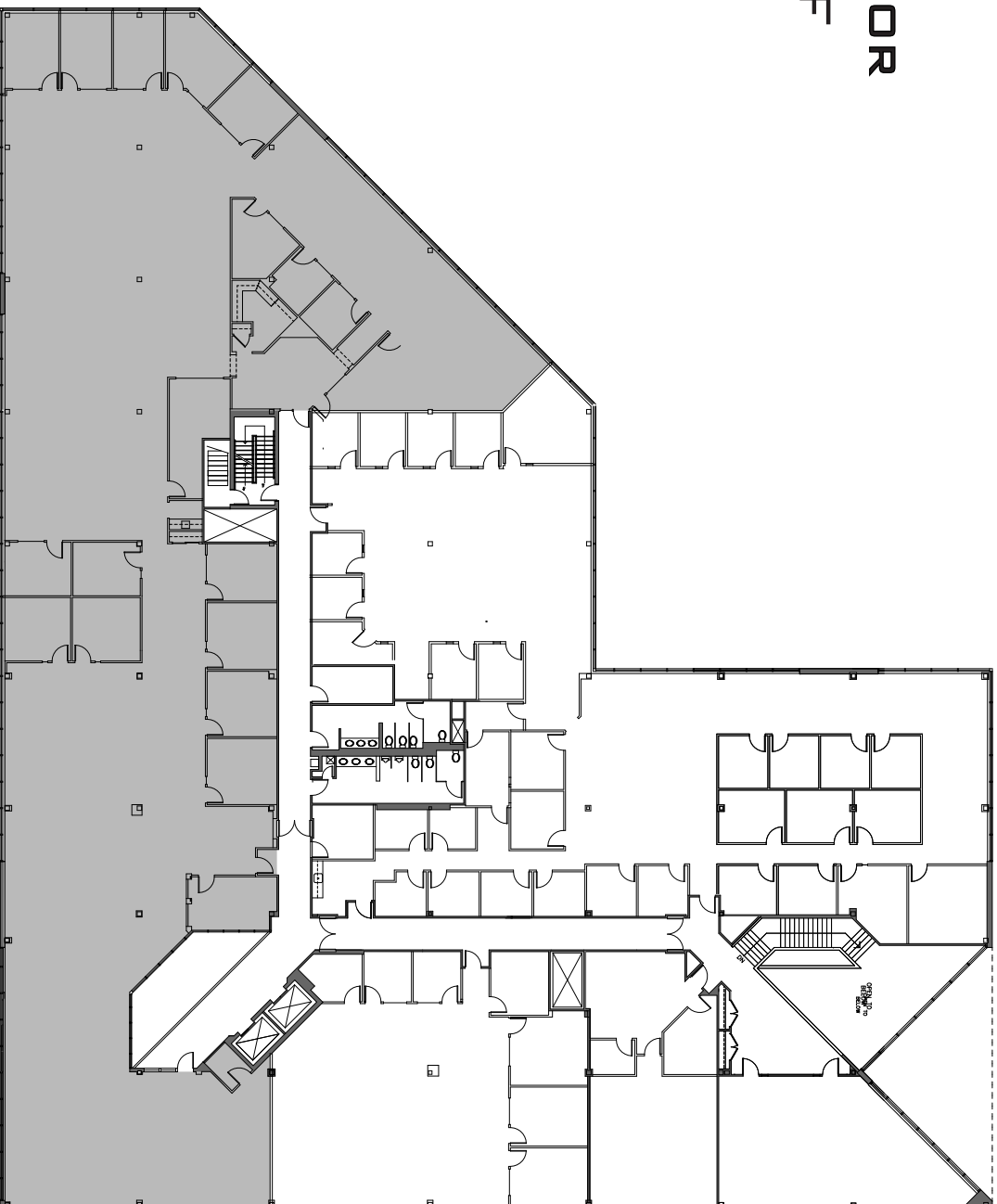
A FIVE-BUILDING 360,000-SQUARE FOOT CLASS A OFFICE PARK

# KILN BROOK OFFICE PARK

LEXINGTON, MASSACHUSETTS

131 HARTWELL AVENUE

## THIRD FLOOR 14,700 SF



**FARLEY | WHITE**  
INTERESTS

FOR MORE INFORMATION, CONTACT  
ROB CONNORS 617 654 9422 OR RCONNORS@FARLEYWHITE.COM

155 FEDERAL STREET  
18TH FLOOR  
BOSTON, MA 02110

