

# KILN BROOK OFFICE PARK

LEXINGTON, MASSACHUSETTS

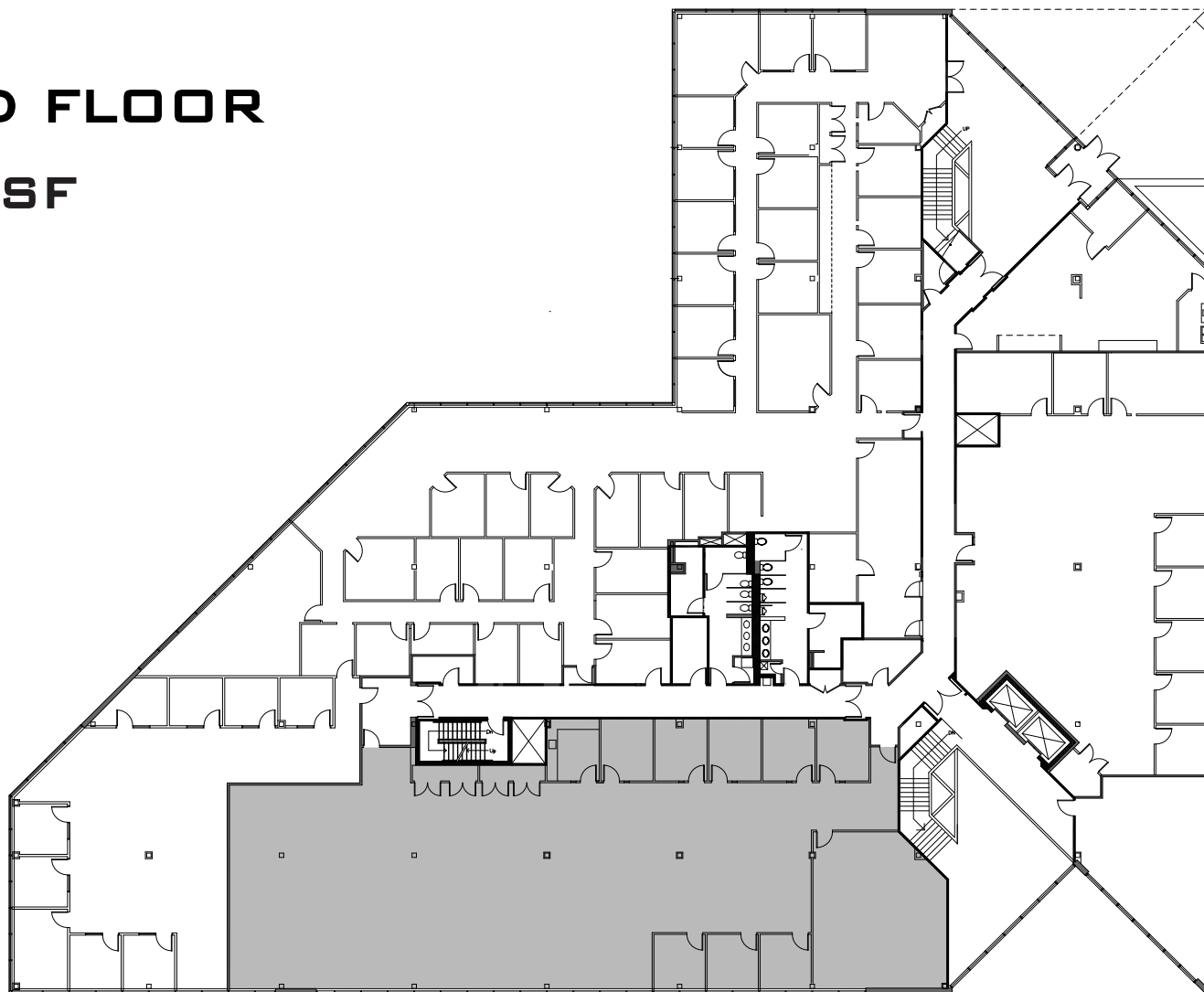
131 HARTWELL AVENUE



A FIVE-BUILDING 360,000-SQUARE FOOT CLASS A OFFICE PARK

## SECOND FLOOR

7,373 SF



**FARLEY | WHITE**  
INTERESTS

FOR MORE INFORMATION, CONTACT

ROB CONNORS 617 654 9422 OR [RCONNORS@FARLEYWHITE.COM](mailto:RCONNORS@FARLEYWHITE.COM)

155 FEDERAL STREET  
18TH FLOOR  
BOSTON, MA 02110